

Dialogannahme

# WHEEL BALANCERS

Version 2024.05.19 – Prices on request

## Wheel balancer G.30

Entry-level wheel balancer | mechanical clamping | automatic data arm | 17" touchscreen | Inside line laser | wheel guard with sonar for steel and alloy wheels

Article number: 1 692 501 001



### Precise balancing in tight spaces: Compact car wheel balancer

#### Measurement and balancing:

- Balancing in 4.7 seconds
- Automatic stop of the wheel 15° before correction position
- LED for better visibility when placing weights
- Internal line laser for precise positioning of weights
- Split program for hiding weights behind different spokes

#### Wheel data recognition:

- Automatic data arm for measuring distance and diameter and weight placement
- Automatic selection of clip-on and adhesive weight program
- Highest measurement accuracy +/- 0.5g

#### Auto Adaptive Mode:

- Dynamic tolerance adjustment based on weight and size
- Minimizes remaining imbalance to eliminate smallest vibrations noticeable by the driver

#### Wheel guard with integrated sonar:

- Automatic recognition of rim width in steel and aluminium rims
- Without manual input with measuring gauge
- Closing of wheel guard automatically starts balancing program

#### 17" touchscreen monitor:

- Graphical step-by-step illustrations
- Simplifies correct balancing with guided processes
- Touchscreen usable with gloves on

#### Quick clamping:

- Mechanical clamping with quick-lock nut
- Stable 40mm shaft
- Wheel weights up to 75kg
- Optional with wheel lift

#### Scope of delivery:

- 3 cones Ø45-111mm
- Quick-lock nut
- Clamping cap
- Pressure ring
- Rubber ring
- 60g counterweight
- Weight pliers

## Wheel balancer G.50 LCD

High-volume workshop wheel balancer | mechanical clamping | automatic data arm | LCD control panel | spot laser | wheel guard with sonar for steel and aluminum wheels | auto stop function | One Plane Balancing

Article number: 1 692 501 009



### Eliminates vibrations day-in day-out: Wheel balancer for intensive use

#### Measurement and balancing

- Balancing in 4.7 seconds
- Automatic stop of the wheel in exact correction position
- LED for better visibility when placing weights
- Internal line laser for precise positioning of weights
- Split program for hiding weights behind different spokes

#### Wheel data recognition

- Automatic data arm for measuring distance and diameter and weight placement
- Automatic selection of clip-on and adhesive weight program
- Highest measurement accuracy +/- 0.5g

#### Auto Adaptive Mode

- Dynamic tolerance adjustment based on weight and size
- Minimizes remaining imbalance to eliminate smallest vibrations noticeable by the driver

#### Wheel guard with integrated sonar

- Automatic recognition of rim width in steel and aluminium rims
- Without manual input with measuring gauge
- Closing of wheel guard automatically starts balancing program

#### Robust LCD control panel:

- Easy operation
- Built workshop-tough
- Independent of user language

### Quick clamping

- Mechanical clamping with quick-lock nut
- Stable 40mm shaft
- Wheel weights up to 75kg
- Optional with wheel lift

### One Plane Balancing

- Eliminates dynamic imbalance with only one weight instead of two
- Fewer correction positions on the rim
- Less consumption of weights

### Scope of delivery

- 4 cones Ø45-111mm
- Quick-lock nut
- Clamping cap
- Pressure ring
- Rubber ring
- 60g counterweight
- Weight pliers

Please note: an upgrade with runout sonar is only possible for G.50 balancers with Touch monitor.

# Wheel balancer G.50

High-volume workshop wheel balancer | mechanical clamping | automatic data arm | 19" touchscreen | spot laser | wheel guard with sonar for steel and aluminum wheels | auto stop function | One Plane Balancing

Article number: 1 692 501 002



## Eliminates vibrations day-in day-out: Wheel balancer for intensive use

### Measurement and balancing

- Balancing in 4.7 seconds
- Automatic stop of the wheel in exact correction position
- LED for better visibility when placing weights
- Internal line laser for precise positioning of weights
- Split program for hiding weights behind different spokes

### Wheel data recognition

- Automatic data arm for measuring distance and diameter and weight placement
- Automatic selection of clip-on and adhesive weight program
- Highest measurement accuracy +/- 0.5g

### Auto Adaptive Mode

- Dynamic tolerance adjustment based on weight and size
- Minimizes remaining imbalance to eliminate smallest vibrations noticeable by the driver

### Wheel guard with integrated sonar

- Automatic recognition of rim width in steel and aluminium rims
- Without manual input with measuring gauge
- Closing of wheel guard automatically starts balancing program

### 19" touchscreen monitor

- Graphical step-by-step illustrations
- Simplifies correct balancing with guided processes
- Touchscreen usable with gloves on

## Quick clamping

- Mechanical clamping with quick-lock nut
- Stable 40mm shaft
- Wheel weights up to 75kg
- Optional with wheel lift

## One Plane Balancing

- Eliminates dynamic imbalance with only one weight instead of two
- Fewer correction positions on the rim
- Less consumption of weights

Upgrade to Pro version (optional): Upgradable with sonar for runout measurement and Hubmatch function.

## Scope of delivery

- 4 cones Ø45-111mm
- Quick-lock nut
- Clamping cap
- Pressure ring
- Rubber ring
- 60g counterweight
- Weight pliers

# Wheel balancer G.50P

High-volume workshop wheel balancer | pneumatic clamping | automatic data arm | 19" touchscreen | spot laser | wheel guard with sonar for steel and aluminum wheels | auto stop function | One Plane Balancing

Article number: 1 692 501 003



## Eliminates vibrations day-in day-out: Wheel balancer for intensive use

### Measurement and balancing

- Balancing in 4.7 seconds
- Automatic stop of the wheel in exact correction position
- LED for better visibility when placing weights
- Internal line laser for precise positioning of weights
- Split program for hiding weights behind different spokes

### Wheel data recognition

- Automatic data arm for measuring distance and diameter and weight placement
- Automatic selection of clip-on and adhesive weight program
- Highest measurement accuracy +/- 0.5g

### Auto Adaptive Mode

- Dynamic tolerance adjustment based on weight and size
- Minimizes remaining imbalance to eliminate smallest vibrations noticeable by the driver

### Wheel guard with integrated sonar

- Automatic recognition of rim width in steel and aluminium rims
- Without manual input with measuring gauge
- Closing of wheel guard automatically starts balancing program

### 19" touchscreen monitor

- Graphical step-by-step illustrations
- Simplifies correct balancing with guided processes
- Touchscreen usable with gloves on

## Secure pneumatic clamping

- Pneumatic clamping with 250kg clamping force
- Ensures consistent clamping for all four wheels
- Wheel weights up to 75kg
- Optional with wheel lift

## One Plane Balancing

- Eliminates dynamic imbalance with only one weight instead of two
- Fewer correction positions on the rim
- Less consumption of weights

Upgrade to Pro version (optional): Upgradable with sonar for runout measurement and Hubmatch function.

## Scope of delivery

- 4 cones Ø45-111mm
- Pneumatic quick-lock sleeve
- Clamping cap for aluminum rims
- Pressure ring
- Rubber ring
- 60g counterweight
- Weight pliers

## Wheel balancer G.90 HD

Truck wheel balancing machine with diagnostic function | Mechanical clamping | Automatic measuring arm | 19" touchscreen | Inner line laser | Wheel guard with sonar for steel and aluminum wheels | Height-adjustable flange

**Article number: 1 692 501 005**



### Truck wheel balancing made easy: Wheel balancing machine for buses and trucks with height-adjustable flange

#### Height-adjustable flange:

- Easy clamping with the wheel on the ground instead of mid-air
- No separate wheel lift required
- Slide with only 59mm build height enables easier lateral movement

#### Measurement and balancing:

- Balancing of truck wheels in 8 seconds
- Wheel stopping in exact position via electromagnetic brake
- LED for enhanced visibility when placing weights
- Inner line laser for precise weight positioning
- Split program for dividing and hidden attachment of weights behind the spokes

#### Detection of wheel data:

- Automatic measuring arm for distance and diameter measurement and weight placement
- Extended measuring arm up to 32" rim diameter
- Automatic selection of clip-on or adhesive weight program
- Highest measurement accuracy +/- 0.5g

#### Wheel guard with integrated sonar:

- Automatic detection of wheel width for steel and aluminum wheels
- No manual input required with measuring gauge
- Balancing program starts automatically upon closing the wheel guard

#### 19" touchscreen monitor:

- Graphical representation of all processes
- Simplifies correct balancing with guided workflows
- Operable even with gloves

#### Quick clamping:

- Mechanical clamping with quick clamping nut
- Stable 40mm shaft
- Handles wheel weights up to 200kg

#### Included in the delivery:

- Quick lock ring
- Clamping cap
- Pressure ring
- 4-arm and 5-arm centering kit 1692502026
- 300g counterweight
- Weight pliers
- Measuring gauge

## Wheel balancer G.90 HD Pro | Diagnostic

Truck wheel balancing machine with diagnostic function | Mechanical clamping | Automatic measuring arm | 19" touchscreen | Inner line laser | Wheel guard with sonar for steel and aluminum wheels | Height-adjustable flange | Height deviation sonar | Hub matching

Article number: 1 692 501 006



### Diagnostic wheel balancing machine for buses and trucks with height-adjustable flange

#### Height-adjustable flange:

- Easy clamping with the wheel on the ground instead of mid-air
- No separate wheel lift required
- Slide with only 59mm build height enables easier lateral movement

#### Measurement and balancing:

- Balancing of truck wheels in 8 seconds
- Wheel stopping in exact position via electromagnetic brake
- LED for enhanced visibility when placing weights
- Inner line laser for precise weight positioning
- Split program for dividing and hidden attachment of weights behind the spokes

#### Detection of wheel data:

- Automatic measuring arm for distance and diameter measurement and weight placement
- Extended measuring arm up to 32" rim diameter
- Automatic selection of clip-on or adhesive weight program
- Highest measurement accuracy +/- 0.5g

#### Wheel guard with integrated sonar:

- Automatic detection of wheel width for steel and aluminum wheels
- No manual input required with measuring gauge
- Balancing program starts automatically upon closing the wheel guard

#### 19" touchscreen monitor:

- Graphical representation of all processes
- Simplifies correct balancing with guided workflows
- Operable even with gloves

#### Quick clamping:

- Mechanical clamping with quick clamping nut
- Stable 40mm shaft
- Handles wheel weights up to 200kg

#### Pro version with diagnostic function:

- Automatic runout measurement during each balancing operation
- Hub matching: eliminates vibrations by rotating the tire on the wheel
- Eliminates even the finest vibrations without the need for expensive load rollers

#### Included in the delivery:

- Quick lock ring
- Clamping cap
- Pressure ring
- 4-arm and 5-arm centering kit 1692502026
- 300g counterweight
- Weight pliers
- Measuring gauge

## Start Line BA 201 | RAL7016 | 230V

Easy, quick, efficient: Start Line BA 201 with LED-display and internal measuring arm | Easy Fit | RAL7016

Article number: 1 694 400 026



### Easy, quick, efficient: Start Line BA 201 with LED-display and internal measuring arm | Easy Fit | RAL7016

5 different balancing programs:

- DYN: Dynamic clip weights, on both sides of the rim. For balancing of steel rims.
- STA: Choose static balancing if no balancing weights are fitted to both sides of a wheel or to the wheel(s) on a motorbike.
- ALU1: Balancing of light alloy rims by attaching adhesive balance weights to the inner and outer side of a rim.
- ALU2: Attach clip-on balance weights and adhesive balance weights to inside of rim.
- ALUS: Adhesive balance weights for any location on inside of rim

Rim distance, rim diameter, and rim width need to be measured manually.

#### Scope of delivery:

- Large flange
- 4 cones
- Spacer plate
- Quick clamping nut
- Weight pliers
- Spring
- Weights 100g
- Rim width caliper
- Adhesive weights remover

Color: RAL7016



## Start Line BA 201 | RAL5015 | 230V

Easy, quick, efficient: Start Line BA 201 with LED-display and internal measuring arm | Easy Fit | RAL5015

Article number: 1 694 200 949



### Easy, quick, efficient: Start Line BA 201 with LED-display and internal measuring arm | Easy Fit | RAL5015

5 different balancing programs:

- DYN: Dynamic clip weights, on both sides of the rim. For balancing of steel rims.
- STA: Choose static balancing if no balancing weights are fitted to both sides of a wheel or to the wheel(s) on a motorbike.
- ALU1: Balancing of light alloy rims by attaching adhesive balance weights to the inner and outer side of a rim.
- ALU2: Attach clip-on balance weights and adhesive balance weights to inside of rim.
- ALUS: Adhesive balance weights for any location on inside of rim

Rim distance, rim diameter, and rim width need to be measured manually.

Scope of delivery:

- Large flange
- 4 cones
- Spacer plate
- Quick clamping nut
- Weight pliers
- Spring
- Weights 100g
- Rim width caliper
- Adhesive weights remover

Color: RAL5015

## Wheel balancer G.20 LCD

Entry-level wheel balancer | mechanical clamping | automatic data arm | LCD control panel | Inside line laser | wheel guard with virtual sonar for steel rims

Article number: 1 692 501 007



### Precise balancing in tight spaces: Compact car wheel balancer

#### Measurement and balancing:

- Balancing in 4.7 seconds
- Automatic stop of the wheel 15° before correction position
- LED for better visibility when placing weights
- Internal line laser for precise positioning of weights
- Split program for hiding weights behind different spokes

#### Wheel data recognition:

- Automatic data arm for measuring distance and diameter and weight placement
- Automatic selection of clip-on and adhesive weight program
- Highest measurement accuracy +/- 0.5g

#### Auto Adaptive Mode:

- Dynamic tolerance adjustment based on weight and size
- Minimizes remaining imbalance to eliminate smallest vibrations noticeable by the driver

#### Wheel guard with virtual sonar:

- Automatic recognition of rim width in steel rims
- Without manual input with measuring gauge or sonar
- Closing of wheel guard automatically starts balancing program

#### Robust LCD control panel:

- Easy operation
- Built workshop-tough
- Independent of user language

#### Quick clamping:

- Mechanical clamping with quick-lock nut
- Stable 40mm shaft
- Wheel weights up to 75kg
- Optional with wheel lift

#### Scope of delivery:

- 3 cones Ø45-111mm
- Quick-lock nut
- Clamping cap
- Pressure ring
- Rubber ring
- 60g counterweight
- Weight pliers

## Wheel balancer G.20

Entry-level wheel balancer | mechanical clamping | automatic data arm | 17" touchscreen | Inside line laser | wheel guard with virtual sonar for steel rims

Article number: 1 692 501 000



### Precise balancing in tight spaces: Compact car wheel balancer

#### Measurement and balancing:

- Balancing in 4.7 seconds
- Automatic stop of the wheel 15° before correction position
- LED for better visibility when placing weights
- Internal line laser for precise positioning of weights
- Split program for hiding weights behind different spokes

#### Wheel data recognition:

- Automatic data arm for measuring distance and diameter and weight placement
- Automatic selection of clip-on and adhesive weight program
- Highest measurement accuracy +/- 0.5g

#### Auto Adaptive Mode:

- Dynamic tolerance adjustment based on weight and size
- Minimizes remaining imbalance to eliminate smallest vibrations noticeable by the driver

#### Wheel guard with virtual sonar:

- Automatic recognition of rim width in steel rims
- Without manual input with measuring gauge or sonar
- Closing of wheel guard automatically starts balancing program

#### 17" touchscreen monitor:

- Graphical step-by-step illustrations
- Simplifies correct balancing with guided processes
- Touchscreen usable with gloves on

#### Quick clamping:

- Mechanical clamping with quick-lock nut
- Stable 40mm shaft
- Wheel weights up to 75kg
- Optional with wheel lift

#### Scope of delivery:

- 3 cones Ø45-111mm
- Quick-lock nut
- Clamping cap
- Pressure ring
- Rubber ring
- 60g counterweight
- Weight pliers

## Wheel balancer G.60P Pro | Diagnostic

Diagnostic wheel balancer for professionals | pneumatic clamping system | automatic wheel recognition | 19" touchscreen | 3D laser scanner + outer line laser | wheel guard with sonar for steel and aluminum wheels | auto stop function | One-Plane Balancing | runout sonar | Hubmatching

Article number: 1 692 501 004



### Diagnosis wheel balancer for passenger cars, designed by professionals for professionals, with fully automatic wheel detection:

#### Measuring and Balancing

- Balancing in 4.7 seconds
- Stops wheel automatically in exact correction position
- LED for increased visibility when placing weights
- Internal laser point for precise weight positioning
- External line laser for clip-on weights
- Split program for hiding weights behind spokes

#### 3D Laser Scanner

- Contactless measurement of distance, rim width, and rim diameter
- Optimized for black and glossy rims
- No data arm or measuring gauge, everything fully automatic

#### Wheel Data Detection

- Fully automatic wheel data detection
- Automatic selection of clip-on and adhesive weights program
- Highest measurement accuracy of +/- 0.5g
- Balancing program starts automatically when closing the wheel guard

#### Auto Adaptive Mode

- Dynamic tolerance adjustment based on weight and size
- Minimizes remaining imbalance to eliminate smallest vibrations noticeable by the driver

#### Wheel guard with integrated sonar

- Automatic recognition of rim width in steel and aluminium rims
- Without manual input with measuring gauge
- Closing of wheel guard automatically starts balancing program

#### 19" touchscreen monitor

- Graphical step-by-step illustrations
- Simplifies correct balancing with guided processes
- Touchscreen usable with gloves on

#### Secure pneumatic clamping

- Pneumatic clamping with 250kg clamping force
- Ensures consistent clamping for all four wheels
- Wheel weights up to 75kg
- Optional with wheel lift

#### One Plane Balancing

- Eliminates dynamic imbalance with only one weight instead of two
- Fewer correction positions on the rim
- Less consumption of weights

#### Pro Version with diagnostic function

- Automatic height deviation measurement with every balancing operation (4.7 seconds)
- Hubmatch: eliminates vibrations by rotating the tire on the wheel
- Eliminates even the slightest vibrations without the need for an expensive roller

#### Lieferumfang

- 4 cones Ø45-111mm

## Standard Service

---



### Start Line BA 201 | RAL7016 | 230V

Article number: 1 694 400 026



### Start Line BA 201 | RAL5015 | 230V

Article number: 1 694 200 949



### Wheel balancer G.20 LCD

Article number: 1 692 501 007



### Wheel balancer G.20

Article number: 1 692 501 000

## High Volume

---



### Wheel balancer G.30

Article number: 1 692 501 001



### Wheel balancer G.50 LCD

Article number: 1 692 501 009



### Wheel balancer G.50

Article number: 1 692 501 002



### Wheel balancer G.50P

Article number: 1 692 501 003

## Premium Service

---

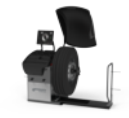


### Wheel balancer G.60P Pro | Diagnostic

Article number: 1 692 501 004

## Truck

---



### Wheel balancer G.90 HD

Article number: 1 692 501 005



### Wheel balancer G.90 HD Pro | Diagnostic

Article number: 1 692 501 006

# IMPORTANT NOTES

- Please notice: This list contains spare parts, too.
- Without instruction or assembly.
- Delivery ex works including packaging.

## VERSION 2024.05.19 – PRICES ON REQUEST

- Starting from now all previous lists will lose their validity.
- Please read our general terms and conditions in the latest version before ordering; to be found under [www.beissbarth.com](http://www.beissbarth.com).

**Order number** 1 693 602 008 **Print norm** BB XXX / XX.XX.2020 DE · Subject to technical and program changes, errors excepted.

### Beissbarth Automotive Testing Solutions GmbH

Hanauer Straße 101  
80993 Munich, Germany  
[sales@beissbarth.com](mailto:sales@beissbarth.com)  
[www.beissbarth.com](http://www.beissbarth.com)

Telefon: +49-(0)89-14901-0  
Telefax: +49-(0)89-14901-246

